

CL09

SIZE: 8 ~ 22

BROWN  
NAVY  
OLIVE



# STAR DANCE

CR884

SIZE: 8 ~ 22

EGGPLANT  
MAUVE  
NAVY



# CM8248

SIZE: 6 ~ 20

- NAVY
- OLIVE



# CD669

SIZE: 0 ~ 18

- EGGPLANT
- SMOKY BLUE



# Sheer INTENTIONS

A leading eveningwear trend is the rise of sheer fabrics, reimagined for 2026 through the delicate layering of chiffon, tulle, and mesh over sculpted inner corsets. The effect is a breathtaking interplay of structure and softness: the body's contours remain structurally defined while translucent layers introduce fluidity, lightness, and an effortless sensuality. These diaphanous veils soften the corset's architecture, adding depth and movement that feel both modern and ethereal. The result evokes a modern Grecian goddess—effortless, fluid, and beautiful.

DRESS FEATURED:  
CD406 IN TAUPE

# CD406

SIZE: 0 ~ 16

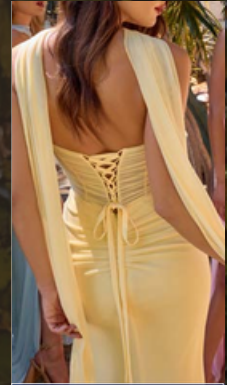
- BLACK
- BLUE
- BURGUNDY
- FUCHSIA
- GREEN
- LILAC
- LT BLUE
- LT YELLOW
- PINK
- RED
- SAGE
- TAUPE



# CD383

SIZE: 0 ~ 14

- CORAL
- LT PINK
- LT YELLOW
- NAVY
- RED
- SOFT MINT



# CD384

SIZE: 0 ~ 14

- BLACK
- BLUE
- BURGUNDY
- CORAL
- DUSTY ROSE
- LT YELLOW



# CD395

SIZE: 2 ~ 18

- BLACK
- BURGUNDY
- CORAL
- DUSTY BLUE
- LAVENDER
- LT YELLOW
- NAVY
- NUDE BLUSH
- RED
- SAGE



# Mulberry

# Mulberry and purple

cated grey-purple—are expected to grow runway adoption behind them, mulberry, over 10% in visibility across European plum, and berry shades are poised to be-womenswear, underscoring their expand-come the season’s trend color.



DRESS FEATURED:  
CD414, CD411, CD415, CD410 IN MULBERRY

# CD387

SIZE: 2 ~ 18  
SEE PLUSIZE VERSION  
AT PAGE 371

- BLACK
- BURGUNDY
- DUSTY ROSE
- MULBERRY
- NAVY
- PURPLE
- TEAL



# 7492

SIZE: 2 ~ 16

# 7492C

SIZE: 18 ~ 24

- BLACK ○
- BURGUNDY ●
- CHAMPAGNE ●
- EMERALD ●
- ESPRESSO ○
- FRENCH NAVY ●
- LAVENDER ●
- MAUVE ROSE ●
- NAVY ●
- SAGE ●
- SIENNA ●
- SMOKY BLUE ●
- TURMERIC GOLD ●



CURVE



# CD386

SIZE: 0 ~ 18

- BLACK
- BLUSH
- DARK BURGUNDY
- DUSTY ROSE
- LAVENDER
- LT BLUE
- LT YELLOW
- NAVY
- SAGE
- SMOKY BLUE



# 7449

SIZE: 2 ~ 16

- BLACK
- BURGUNDY
- CHAMPAGNE
- FRENCH NAVY
- LT BLUE
- LT YELLOW
- MAUVE ROSE
- SAGE
- SIENNA



# 7446

SIZE: 2 ~ 16

- ESPRESSO
- GREENERY
- LAVENDER
- MAUVE
- NAVY



# 7433

SIZE: 2 ~ 20

- BLACK
- BURGUNDY
- COBALT
- DUSTY ROSE
- DUSTY SAGE
- HUNTER GREEN
- LAVENDER
- LT YELLOW
- ORCHID
- PURPLE
- SOFT BLUE
- SIENNA



# CD393

SIZE: 4 ~ 24

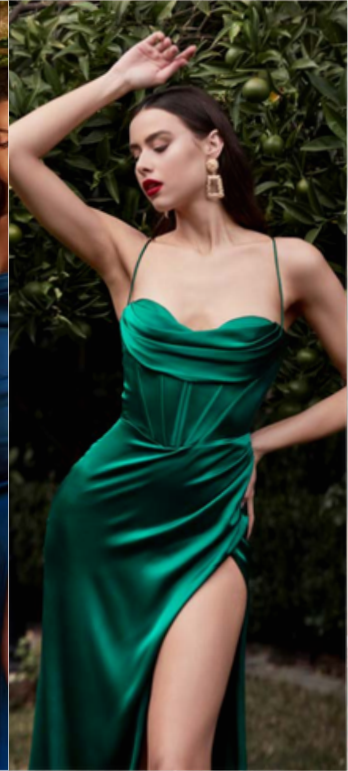
- BURGUNDY
- GOLD
- GREENERY
- MOCHA
- NAVY
- ORANGE
- PARIS BLUE
- PEACOCK
- ROSE
- YELLOW



# 7483

SIZE: 2 ~ 18

- BLACK
- BURGUNDY
- CHAMPAGNE
- CORAL
- EMERALD
- ESPRESSO
- FRENCH NAVY
- LAVENDER
- LT BLUE
- LT YELLOW
- MAGENTA
- MAUVE
- MAUVE ROSE
- NAVY
- OLIVE
- RED
- SAGE
- SIENNA
- SMOKY BLUE
- SOFT MINT
- TAUPE





- BLACK
- BURGUNDY
- CHAMPAGNE GOLD
- DUSTY BLUE
- EGGPLANT
- EMERALD
- ENGLISH VIOLET
- ESPRESSO
- FRENCH NAVY
- GREENERY
- LT LAVENDER
- LT YELLOW
- MAUVE ROSE
- NAVY
- ROYAL
- SAGE
- SIENNA

SIZE: 2 ~ 16

7493



- BLACK
- BURGUNDY
- CHAMPAGNE GOLD
- DUSTY BLUE
- EGGPLANT
- EMERALD
- ENGLISH VIOLET
- ESPRESSO
- FRENCH NAVY
- GREENERY
- LT LAVENDER
- LT YELLOW
- MAUVE ROSE
- NAVY
- ROYAL
- SAGE
- SIENNA

SIZE: 18 ~ 24

7493C



7447

SIZE: 0 ~ 16

- LT YELLOW
- MAUVE
- NAVY
- PARIS BLUE
- SAGE



# 7481

SIZE: 2 ~ 20

- BLACK
- BURGUNDY
- CORAL
- EMERALD
- FRENCH NAVY
- LAVENDER
- LT BLUE
- LT YELLOW
- MAUVE ROSE
- SAGE
- SOFT MINT



- BLACK
- BLUSH
- BURGUNDY
- CHAMPAGNE GOLD
- EMERALD
- ENGLISH VIOLET
- ESPRESSO
- GREENERY
- LT LAVENDER
- LT YELLOW
- MAUVE
- MAUVE ROSE
- NAVY
- PARIS BLUE
- ROYAL
- SAGE
- SIENNA
- SMOKY BLUE

SIZE: 4 ~ 16

# 7485



- BLACK
- BLUSH
- BURGUNDY
- CHAMPAGNE GOLD
- EMERALD
- ENGLISH VIOLET
- ESPRESSO
- GREENERY
- LT LAVENDER
- MAUVE
- MAUVE ROSE
- NAVY
- PARIS BLUE
- ROYAL
- SAGE
- SIENNA
- SMOKY BLUE

SIZE: 16 ~ 24

# 7485C



# Espresso: the NEW BLACK

**D**ark brown is emerging as one of 2026's most requested color, redefining the modern neutral with its rich, sophisticated. Shoppers are leaning into cocoa, espresso, and deep mahogany tones as a luxurious alternative to black—offering the same sleek minimalism but with added warmth and depth. Dark brown delivers an understated elegance that feels contemporary, sensual, and refreshingly refined.



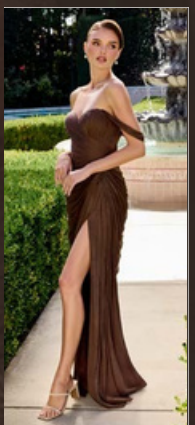
7454



7485



7493



CD417



CD733



CD803



J875



7446

# CD796

SIZE: 2 ~ 16

# CD796C

SIZE: 18 ~ 24

- BLACK
- BURGUNDY
- DARK SAGE
- DUSTY BLUE
- DUSTY ROSE
- EGGPLANT
- ESPRESSO
- EMERALD
- GREENERY
- LAKE BLUE
- MAGENTA
- NAVY
- NUDE GOLD
- RED
- ROYAL
- SIENNA ROSE
- SMOKY BLUE

CURVE





# PT004

SIZE: 4 ~ 16

# PT004C

SIZE: 18 ~ 24

- BLACK
- BURGUNDY
- DARK SAGE
- DUSTY ROSE
- EGGPLANT
- ESPRESSO
- MAGENTA
- NAVY
- NUDE GOLD
- SIENNA ROSE
- SMOKY BLUE
- HUNTER GREEN (REGULAR ONLY)

CURVE



# CD791

SIZE: 2 ~ 16

- BLACK
- BURGUNDY
- DARK SAGE
- DUSTY BLUE
- DUSTY ROSE
- EGGPLANT
- ESPRESSO
- HUNTER GREEN
- MAGENTA
- NAVY
- NUDE GOLD
- RED
- ROYAL
- SIENNA ROSE



348



348

347

# 7448

SIZE: 4 ~ 18

- BLACK
- BURGUNDY
- CHAMPAGNE
- EMERALD
- ESPRESSO
- FRENCH NAVY
- LAVENDER
- MAUVE ROSE
- NAVY
- OLIVE
- RED
- SAGE
- SIENNA
- SMOKY BLUE
- TAUPE
- TURMERIC GOLD





- BLACK
- BURGUNDY
- DUSTY ROSE
- EGGPLANT
- HUNTER GREEN
- NAVY
- RED
- ROYAL
- SMOKY BLUE

SIZE: 2 ~ 16

# CD790



- BLACK
- BURGUNDY
- DUSTY ROSE
- EGGPLANT
- HUNTER GREEN
- NAVY
- ROYAL
- SMOKY BLUE

SIZE: 18 ~ 24

# CD790C

# 7454

SIZE: 2 ~ 18

- BLACK
- BURGUNDY
- ESPRESSO
- FRENCH NAVY
- LT YELLOW
- MAUVE
- SAGE



# 7452

SIZE: 4 ~ 20

- BLACK
- BURGUNDY
- CHAMPAGNE
- EMERALD
- NAVY
- RED
- SAGE
- SIENNA



# 7451

SIZE: 2 ~ 18

- BLACK
- BURGUNDY
- EMERALD
- FRENCH NAVY
- LT BLUE
- MAUVE
- MAUVE ROSE
- RED
- SAGE
- SIENNA



# 7469

SIZE: 2 ~ 24

- BLACK
- BLUSH
- BURGUNDY
- CHAMPAGNE GOLD
- DARK MAUVE
- DUSTY BLUE
- EGGPLANT
- EMERALD
- ENGLISH VIOLET
- FRENCH NAVY
- GREENERY
- LT LAVENDER
- LT YELLOW
- MAUVE
- MAUVE ROSE
- NAVY
- PARIS BLUE
- ROYAL
- SAGE
- SIENNA
- SMOKY BLUE



355

# 7450

SIZE: 4 ~ 18

- BLACK
- EGGPLANT
- EMERALD
- FRENCH NAVY
- MAUVE
- SMOKY BLUE



356

# CC1618

SIZE: 2~ 14

- AMETHYST
- BLACK-BLACK
- BURGUNDY
- EMERALD
- MAGENTA
- NAVY
- POWDER BLUE
- RED
- ROYAL



# B8402

SIZE: XS ~ 2X

- BLACK
- BLUSH
- BURGUNDY
- DARK SAGE
- EMERALD
- FRENCH NAVY
- GREENERY
- OFF WHITE
- PURPLE
- RED
- ROYAL
- SIENNA



# CD355

SIZE: 2 ~ 16

- BLACK
- EMERALD
- NAVY
- RED
- WINE



# 7496

SIZE: 4 ~ 16

# 7496C

SIZE: 18 ~ 24

- BLACK
- BURGUNDY
- DARK MAUVE
- HUNTER GREEN
- MAUVE ROSE
- NAVY
- ROSE GOLD
- SAGE
- SIENNA

CURVE





- BLACK
- BURGUNDY
- CHAMPAGNE GOLD
- DESERT ROSE
- DUSTY BLUE
- DUSTY ROSE
- EGGPLANT
- EMERALD
- FRENCH NAVY
- MOSS GREEN
- SAGE
- SAND
- SIENNA

SIZE: XS ~ 2X

BD103



- BLACK
- BURGUNDY
- DUSTY BLUE
- DUSTY ROSE
- EGGPLANT
- EMERALD
- FRENCH NAVY
- GREENERY
- HOT PINK
- LAVENDER
- MOSS GREEN
- NAVY
- ROYAL
- SAGE
- SAND
- SIENNA

SIZE: XS ~ 3X

BD104



# CD337

SIZE: 2 ~ 16  
SEE PLUS SIZE VERSION  
AT PAGE 392

- BLACK
- BURGUNDY
- CHAMPAGNE
- EMERALD
- LAVENDER
- LT BLUE
- MAUVE
- NAVY
- RED
- SAGE
- SIENNA
- SMOKY BLUE



- BLACK
- BURGUNDY
- CYAN
- DARK SAGE
- DESERT ROSE
- DUSTY BLUE
- DUSTY ROSE
- EGGPLANT
- EMERALD
- ESPRESSO
- LAKE BLUE
- MAGENTA
- NAVY
- NUDE GOLD
- RED
- ROYAL
- SIENNA ROSE
- SMOKY BLUE

SIZE: 4 ~ 16

# CD943



- BLACK
- BURGUNDY
- DARK SAGE
- DESERT ROSE
- DUSTY BLUE
- DUSTY ROSE
- EGGPLANT
- EMERALD
- ESPRESSO
- LAKE BLUE
- MAGENTA
- NAVY
- NUDE GOLD
- RED
- ROYAL
- SIENNA ROSE
- SMOKY BLUE

SIZE: 18 ~ 24

# CD943C

KV1132C

SIZE: 18 ~ 24

- BLACK ●
- DUSTY BLUE ●
- DUSTY ROSE ●
- RED ●

# Curve

PLUS SIZE GOWNS THAT  
*Empower Every Curve*



# CDS556C

SIZE: 18 ~ 24

- BLACK
- GOLD
- GREENERY
- SMOKY BLUE



# CC463C

SIZE: 18 ~ 24

- BLACK
- DEEP RED
- NAVY
- SMOKY BLUE



# CC475C

SIZE: 18 ~ 24

- BLACK
- DEEP RED
- DUSTY BLUE
- MOCHA GOLD
- NAVY
- SILVER



# CD387C

SIZE: 18 ~ 24

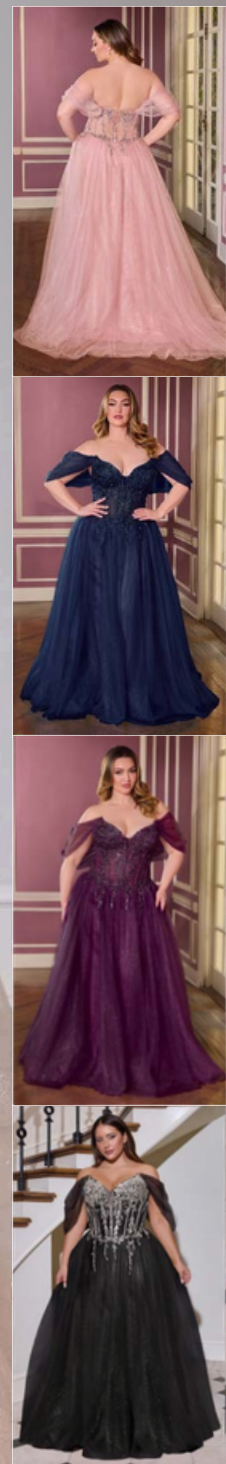
- BLACK
- BURGUNDY
- MULBERRY
- NAVY
- TEAL



# CD721C

SIZE: 18 ~ 24

- BLACK-SILVER
- EGGPLANT
- GOLD
- MAUVE
- NAVY



# CD422C

SIZE: 16 ~ 24

● NAVY



# CB162C

SIZE: 18 ~ 24

● BLACK-NUDE

● RED-NUDE



# CC0389C

SIZE: 20 ~ 24

- BLACK-NUDE
- ROSE GOLD
- SMOKY BLUE



# CM365C

SIZE: 18 ~ 24

BLACK



# CD718C

SIZE: 18 ~ 24

- GOLD
- NAVY



# CD729C

SIZE: 18 ~ 24

- GOLD
- ROSE GOLD

DETACHABLE SLEEVE



# CD396C

SIZE: 18 ~ 24

- NAVY
- PLATINUM



# KV1142C

SIZE: 18 ~ 24

- BLACK
- BLUE



# CD668C

SIZE: 18 ~ 24

- BLACK
- DARK SILVER
- JUSTY ROSE
- NAVY
- SAGE



# CC8270C

SIZE: 18 ~ 24

SILVER-NUDE ●



# CC398C

SIZE: 18 ~ 24

- MOCHA GOLD
- NAVY
- SILVER-NUDE
- SMOKY BLUE



# CD736C

SIZE: 18 ~ 24

- BLACK
- BLUE
- GOLD
- NAVY



# KV1136C

SIZE: 18 ~ 24

- BLACK
- HAMPAGNE
- ROSE GOLD



# CC416C

SIZE: 18 ~ 24

- BLACK ●
- MOCHA GOLD
- SILVER-NUDE



# CDS529C

SIZE: 18 ~ 24

- BLACK
- JUSTY BLUE
- NAVY



# CDS537C

SIZE: 16 ~ 24

- BLACK
- EMERALD
- MOCHA GOLD



# CM383C

SIZE: 18 ~ 24

BLACK  
PEACOCK



# CC341C

SIZE: 18 ~ 24

NAVY  
SMOKY BLUE





EMERALD  
NAVY  
SIZE: 18 ~ 24  
**CD752C**



○ BLACK-NUDE  
● EMERALD  
● SMOKY BLUE  
SIZE: 18 ~ 24  
**CD0219C**



**CD337C**

- SIZE: 18 ~ 24
- BLACK ○
  - BURGUNDY ●
  - CHAMPAGNE ●
  - EMERALD ●
  - NAVY ●
  - RED ●
  - SIENNA ●
  - SMOKY BLUE ●



DRESS FEATURED:  
CC2430 IN ROSEGOLD, SILVER-NUDE



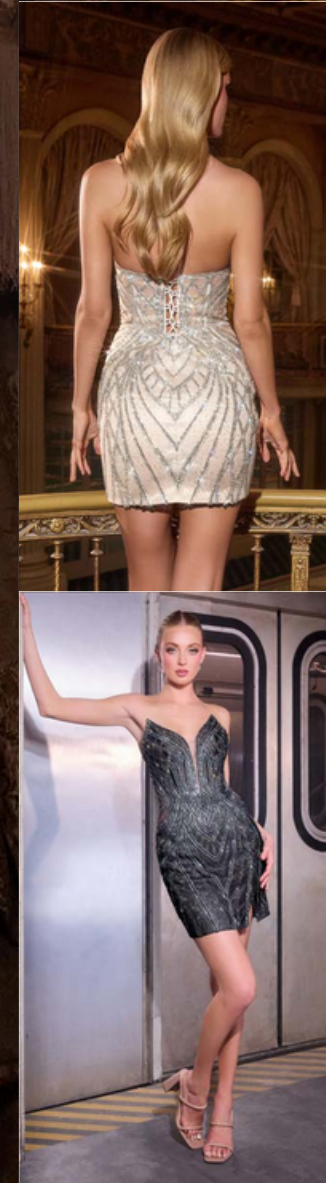
# Mini DRESSES

SHORT STATEMENT DRESSES FOR *Homecoming & Formals*

# CC2430

SIZE: 2 ~ 12

- BLACK-NUDE
- ROSE GOLD
- SILVER-NUDE



# J879

SIZE: 0 ~ 14

- LT BLUE
- RED
- ROYAL
- SAGE
- SILVER



# CDS531

SIZE: 0 ~ 10

- BLACK
- ROSE GOLD



# CC461

SIZE: 0 ~ 14

- BLUSH
- BURGUNDY
- NAVY
- SILVER-NUDE



# CM375

SIZE: 0 ~ 12

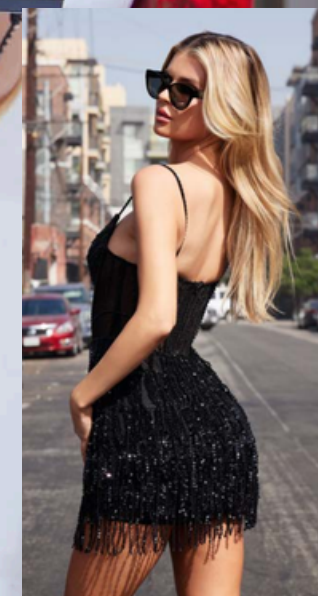
● SILVER



# CD780

SIZE: 2 ~ 14

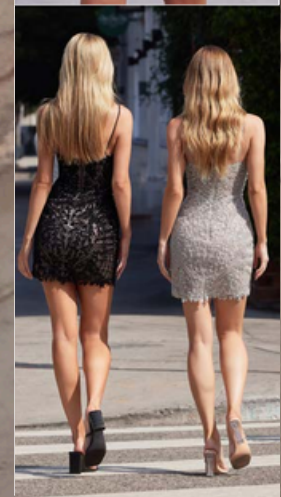
● BLACK  
● PLATINUM



# CC389

SIZE: 0 ~ 14

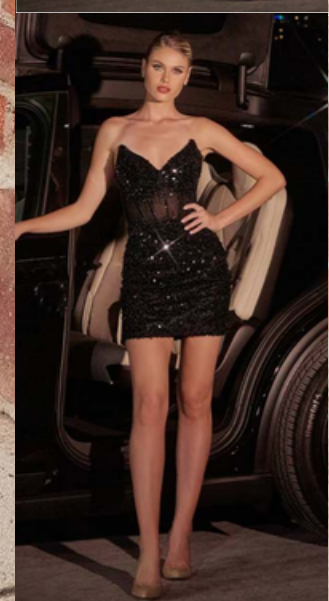
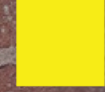
- BLACK-NUDE
- SILVER-NUDE
- SMOKY BLUE



# CC332

SIZE: 0 ~ 14

- BLACK
- GOLD
- SILVER-NUDE
- SMOKY BLUE



# KV1133

SIZE: 2 ~ 18

- BLACK
- BURGUNDY
- GREENERY
- LT BLUE
- LT YELLOW
- PINK



# CDS566

SIZE: 0 ~ 14

PINK ●





Ladivine  
BY CINDERELLA DIVINE

# STAR DANCE



55 5298 2305 / 55 5709 8360



[www.stardance.com.mx](http://www.stardance.com.mx)



Av. 20 de Noviembre #83 2° piso  
Col. Centro CDMX